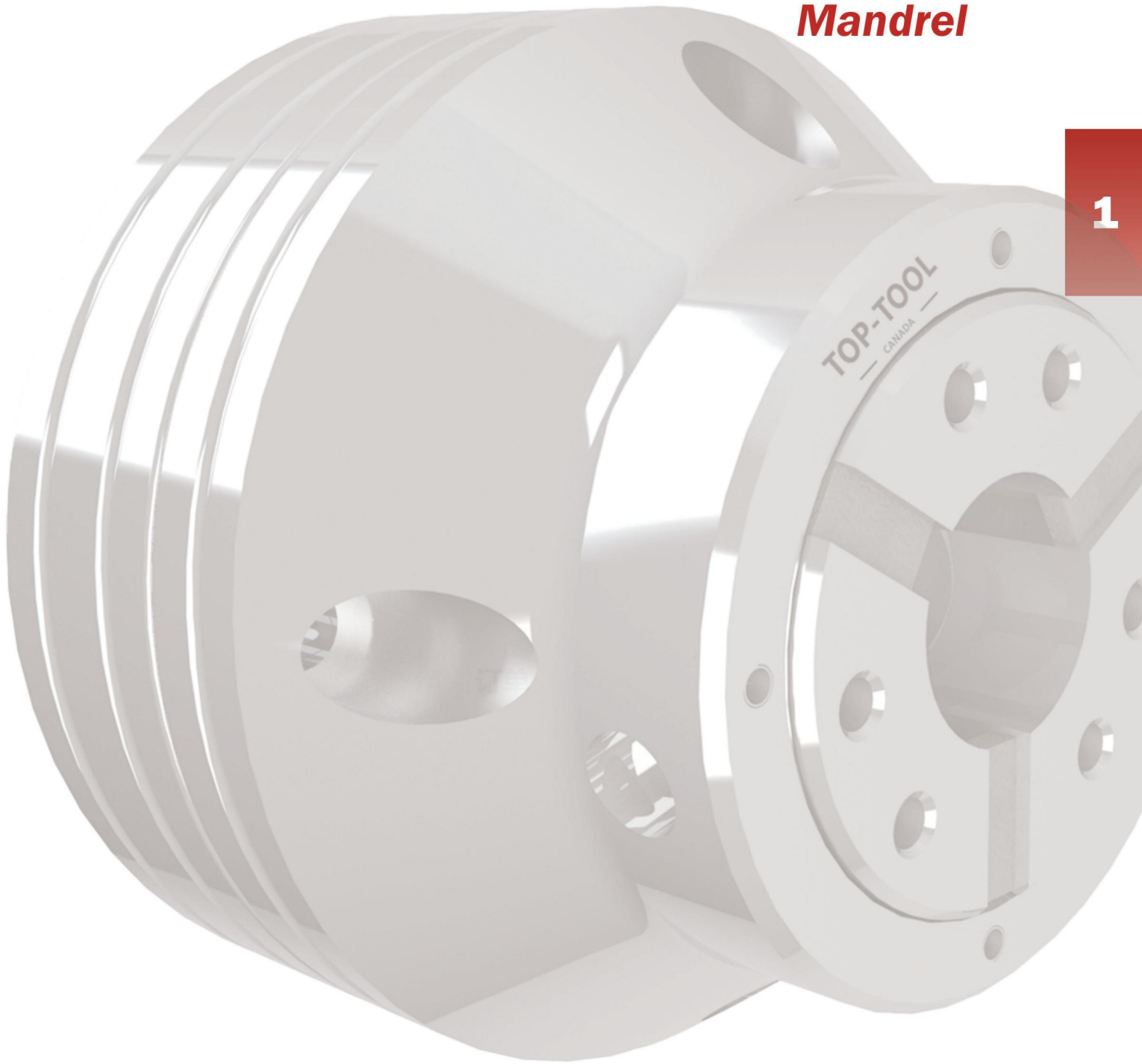


**Clamping Head
Chuck
Mandrel**



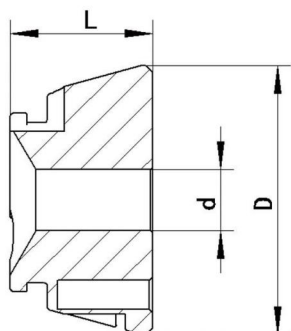
| Precision in Every Hold

Clamping Head

High-rigidity and high-precision spring collet.

Quick installation and removal within 10 seconds using a dedicated tool.

Wide clamping range, compatible with robotic arms.a



S-Smooth



R-Radial Grooves



RL-Radial and Longitudinal Grooves

EM-Emergency

Type	Ref.	L	D	d ●	d ■	d ◆
32	32S	44	57.7	6-32	7-27	7-22
	32R	44	57.7	8-32	8-27	8-22
	32RL	44	57.7	11-32		
	32EM	44	57.7	4-32		

Type	Ref.	L	D	d ●	d ■	d ◆
42	42S	42	79.3	6-42	7-38	7-30
	42R	42	79.3	8-42	8-38	8-30
	42RL	42	79.3	11-42		
	42EM	42	79.3	4-42		

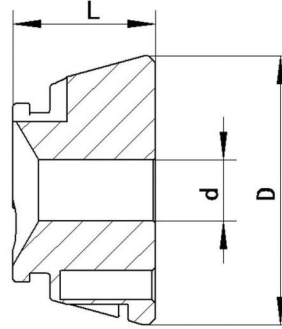
Type	Ref.	L	D	d ●	d ■	d ◆
52	52S	46	79.3	6-52	7-45	7-36
	52R	46	79.3	8-52	8-45	8-36
	52RL	46	79.3	11-52		
	52EM	46	79.3	4-52		

Type	Ref.	L	D	d ●	d ■	d ◆
65	65S	53	99.5	6-65	7-56	7-46
	65R	53	99.5	8-65	8-56	8-46
	65RL	53	99.5	11-65		
	65EM	53	99.5	4-65		

Type	Ref.	L	D	d ●	d ■	d ◆
80	80S	53	114.5	6-80	7-68	7-56
	80R	53	114.5	8-80	8-68	8-46
	80RL	53	114.5	11-80		
	80EM	53	114.5	4-80		

Type	Ref.	L	D	d ●	d ■	d ◆
100	100S	59	144.5	40-100		
	100R	59	144.5	40-100		
	100RL	59	144.5	40-100		
	100EM	59	144.5	40-100		

Clamping Head For Multi-Spindle



S-Smooth

	Type	Ref.	L	D			
					●	A	by
R-Radial Grooves	Index MS16	16l	35	44.3	4-16	L	0.5
					8-16	R	0.5
					11-16	RL	0.5

RL-Radial and Longitudinal Grooves

	Type	Ref.	L	D			
					●	A	by
	Index MS18	22l	36	44.3	4-22	L	0.5
					8-22	R	0.5
					11-22	RL	0.5

EM-Emergency

	Type	Ref.	L	Ref.	L	D			
							●	A	by
	Index MS22	9022L	37	9022BL	40	44.3	4-22	L	0.5
		9022R	37	9022BR	40	44.3	8-22	R	0.5
		9022RL	37	9022BS	40	44.3	11-22	RL	0.5

	Type	Ref.	L	D			
					●	A	by
	Index MS32	32l	47.15	61	4-32	L	0.5
					8-32	R	0.5
					11-32	RL	0.5

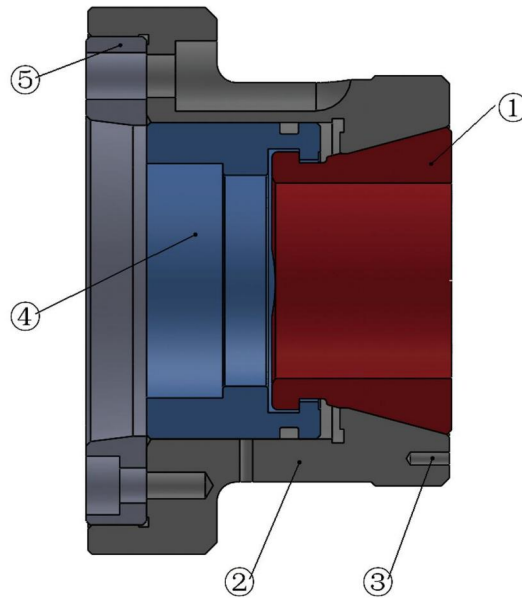
	Type	Ref.	L	D			
					●	A	by
	Schutte AF26, SE25, SE26, SF26-S	39S	38	60.5	4-26	L	0.5
					8-26	R	0.5
					11-26	RL	0.5

	Type	Ref.	L	D			
					●	A	by
	Mori Say 6-26	69B	43	69.8	6-32	L	0.5

	Type	Ref.	L	D			
					●	A	by
	index ABC	42l	43	69.8	6-32	L	0.5

Through-Hole Chuck

This chuck is suitable for longer bar stock or workpieces using a front-end locating device.



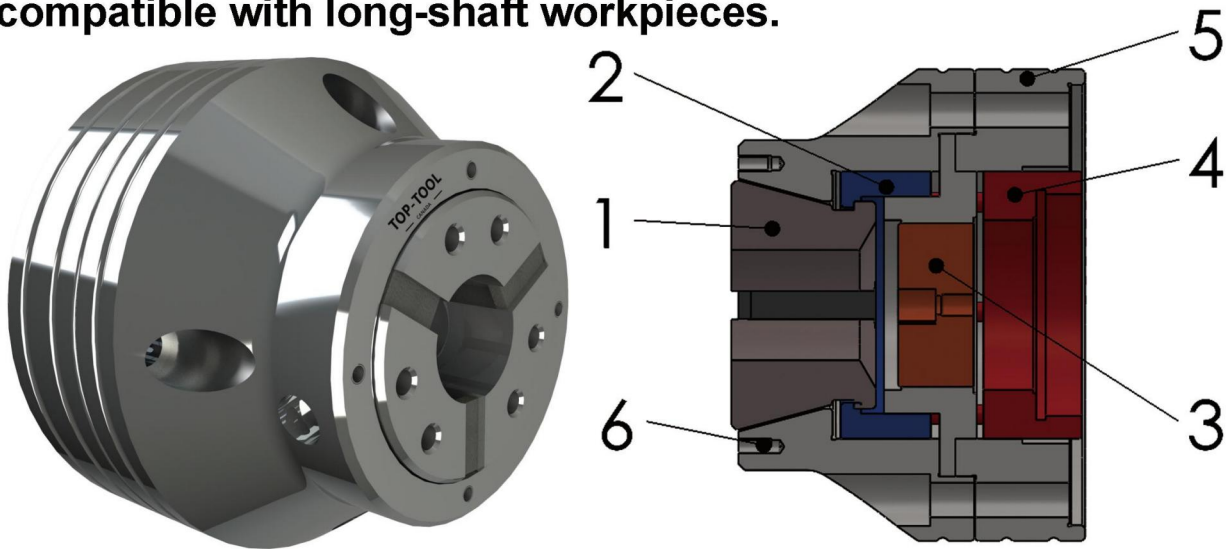
<i>Designation</i>	
1	Clamping head vulcanized with hardened steel segments and pull-down effect
2	High-precision chuck body made of hardened steel.
3	Front stop mounting threads
4	Draw tube connection mounting threads
5	Flange of the Spindle

	<i>Stroke[mm]</i>	<i>Max. Pulling Force[KN]</i>	<i>Max. Radial Clamping Force[KN]</i>	<i>Max. Clamping Diameter[mm]</i>	<i>Recommended Workpiece Tolerance[mm]</i>	<i>Max. Speed[1/min.]</i>
32	2.5+3	25	70	32	±0.3	8000
42	2+2.5	35	80	42	±0.5	7000
52	2+2.5	40	94	52	±0.5	7000
65	2+2.5	45	105	65	±0.5	6000
80	2+2.5	50	115	80	±0.5	5500
100	3+5	65	150	100	±1.0	5000
125	3+6	70	165	125	±1.0	3200
160	3+3	100	235	160	±1.0	3200

For more models, please contact us to request information.

Chuck With End Stop

The chuck is suitable for short-shaft workpieces and is also compatible with long-shaft workpieces.



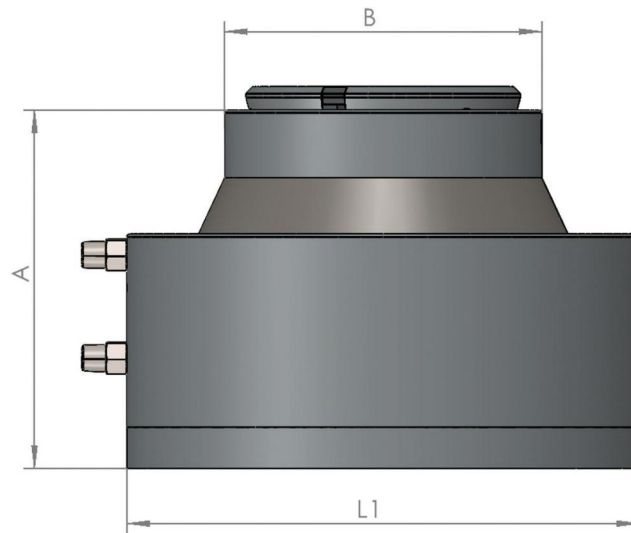
<i>Designation</i>	
1	Clamping head vulcanized with hardened steel segments and pull-down effect
2	Claming head push-pull ring
3	End Stop
4	Draw tube connection mounting threads
5	Flange of the Spindle
6	Front stop mounting threads

	<i>Stroke[mm]</i>	<i>Max. Pulling Force[KN]</i>	<i>Max. Radial Clamping Force[KN]</i>	<i>Max. Clamping Diameter[mm]</i>	<i>Recommended Workpiece Tolerance[mm]</i>	<i>Max. Speed[1/min.]</i>
32	2.5+3	25	70	32	±0.3	8000
42	2+2.5	35	80	42	±0.5	7000
52	2+2.5	40	94	52	±0.5	7000
65	2+2.5	45	105	65	±0.5	6000
80	2+2.5	50	115	80	±0.5	5500
100	3+5	65	150	100	±1.0	5000
125	3+6	70	165	125	±1.0	3200
160	3+3	100	235	160	±1.0	3200

For more models, please contact us to request information.

Hydraulic Fixed Chuck

Applicable to CNC, milling machines, drilling machines, and other vertical processing equipment.



Model	A	B	L1	Accuracy [mm]	Mounting Bolts	Clamping Range[mm]
52	120	125	154	0.01	PCD Ø157 (M8)	6-52
65	130	130	174	0.01	PCD Ø180 (M8)	6-65
80	130	160	186	0.01	PCD Ø194 (M8)	16-80
100	140	220	229	0.01	PCD Ø240 (M8)	26-100

Accessory

Manual Clamping Head Changing Tool



<i>Model</i>	<i>Clamping Head</i>
CCT42	42S/SR/RL
CCT52	52S/SR/RL
CCT65	65S/SR/RL
CCT80	80S/SR/RL

Larger models of the clamping head require pneumatic tools.
Please consult the pre-sales service staff.

Turning Fixture

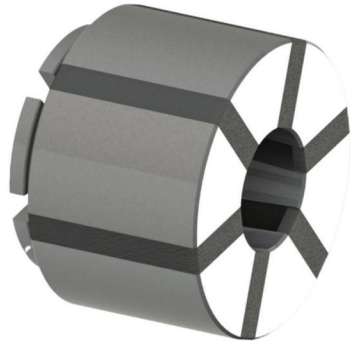


<i>Model</i>	<i>Clamping Head</i>
TF42	42EM
TF52	52EM
TF65	65EM
TF80	80EM

Used in conjunction with the EM clamping head,
it can adjust the clamping diameter of the collet.

Collet-SB2 Series

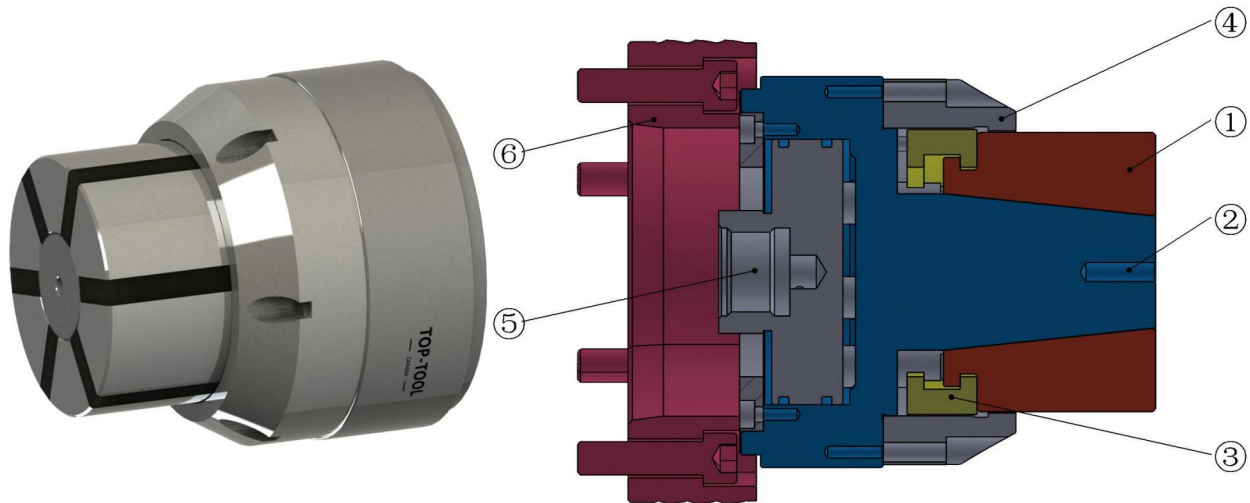
Suitable for the internal expansion of blind hole workpieces.



Size	Clamping Range(mm)	Recommended Workpiece Tolerance (mm)	maximum length [mm]	By
SB2A0	8-13	±0.2	6-12.9	0.5
SB2A1	13-19	±0.25	14	1
SB2A2	16-21	±0.25	15	1
SB200	20-28	±0.25	21	1
SB210	26-38	±0.25	25	1
SB220	36-54	±0.25	40	1
SB230	50-80	±0.35	44.5	1
SB240	69-100	±0.4	52.5	1
SB250	100-130	±0.5	53	1
SB260	130-160	±0.25	61	1
SB270	160-190	±0.25	63	1

Mandrels - KD Series

This chuck is suitable for the internal expansion of blind hole workpieces.



Designation	
1	Clamping Sleeve vulcanized with hardened steel segments
2	High-precision chuck body made of hardened steel.
3	Coupling Ring for Quick Change of Segment Clamping Sleeve
4	End Stop
5	Draw tube connection mounting threads
6	Flange of the Spindle

	Stroke[mm]	Max. Pulling Force[KN]	Max. Radial Clamping Force[KN]	Clamping Range [mm]	Recommended Workpiece Tolerance [mm]	Max. Speed[1/min.]
A0	1.5+1.5	10	42	8-13	±0.2	7000
A1	1.5+2	10	42	13-19	±0.25	7000
A2	1.5+2	10	42	16-21	±0.25	7000
0	1.5+2	10	42	20-28	±0.25	7000
1	1.5+2	10	42	26-38	±0.25	7000
2	1.5+2	20	85	36-54	±0.25	7000
3	2+2.5	25	105	50-80	±0.35	6000
4	2.5+3	35	150	69-100	±0.4	6000
5	3+3	40	170	100-130	±0.5	5000
6	3+3	40	170	130-160	±0.5	4000
7	3+4	45	190	160-190	±0.5	3200

For more models, please contact us to request information.

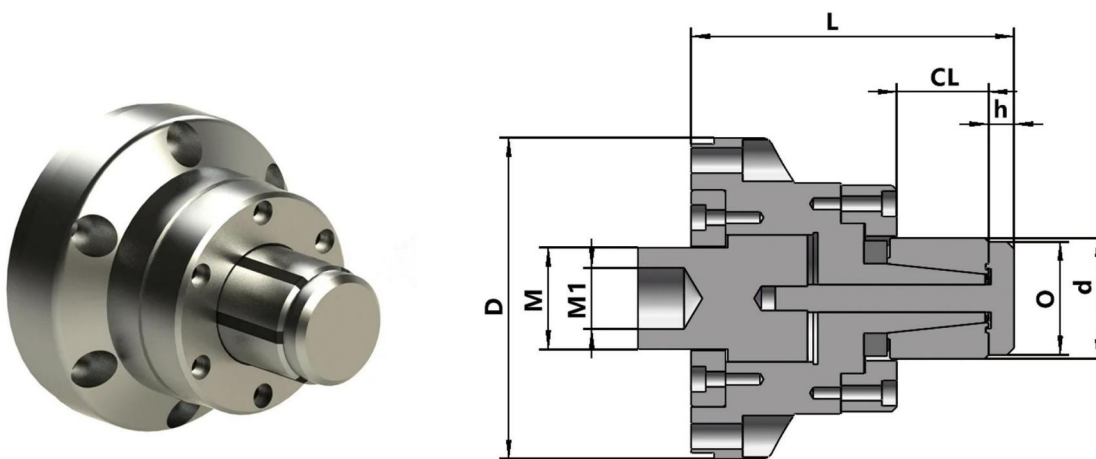
Collet - SB1 Series

Suitable for workpieces with through-holes for internal expansion.



<i>Size</i>	<i>Clamping Range(mm)</i>	<i>Recommended Workpiece Tolerance (mm)</i>	<i>maximum length [mm]</i>	<i>By</i>
<i>SB100</i>	20-28	± 0.25	22	0.5
<i>SB110</i>	26-38	± 0.25	26	0.5
<i>SB120</i>	36-54	± 0.25	43	0.5
<i>SB130</i>	50-80	± 0.35	49	0.5
<i>SB140</i>	69-100	± 0.4	59	0.5
<i>SB150</i>	100-130	± 0.5	86	1
<i>SB160</i>	130-160	± 0.5	96	1
<i>SB170</i>	160-200	± 0.5	94	1

Mandrels - KB Series



Suitable for workpieces with through-holes for internal expansion.

<i>Model</i>	<i>D</i>	<i>L</i>	<i>O</i>	<i>h</i>	<i>d</i>	<i>M</i>
KB100	139	100	19	7.5	20-28	M44*1.5
KB110	139	110	25	11	26-38	M44*1.5
KB120	139	130	35	10	36-54	M44*1.5
KB130	139	140	49	11	50-80	M44*1.5
KB140	139	155	68	16	69-120	M44*1.5
KB150	230	195	97	16	100-130	M44*1.5
KB160	230	220	125	25	130-160	M44*1.5
KB170	230	245	156	29.5	160-200	M44*1.5

<i>Model</i>	<i>M1</i>	<i>Collet</i>	<i>Type</i>	<i>Stroke</i>	<i>Max. CL</i>	<i>Camping Range</i>
KB100	M30*1.5	SB100	Pull-back	1.5+2	22	±0.25
KB110	M30*1.5	SB110	Pull-back	1.5+2	26	±0.25
KB120	M30*1.5	SB120	Pull-back	1.5+2	43	±0.25
KB130	M30*1.5	SB130	Pull-back	2+2.5	49	±0.3
KB140	M30*1.5	SB140	Pull-back	2.5+3	59	±0.4
KB150	M30*1.5	SB150	Pull-back	3+3	86	±0.5
KB160	M30*1.5	SB160	Pull-back	3+3	96	±0.5
KB170	M30*1.5	SB170	Pull-back	3+3	94	±0.5

TOP-TOOL

— CANADA —

Note:

